

MONTHLY MEMBERSHIP PROGRESS REPORT

District 202 D

Results as of: 5/31/2024

GMT:

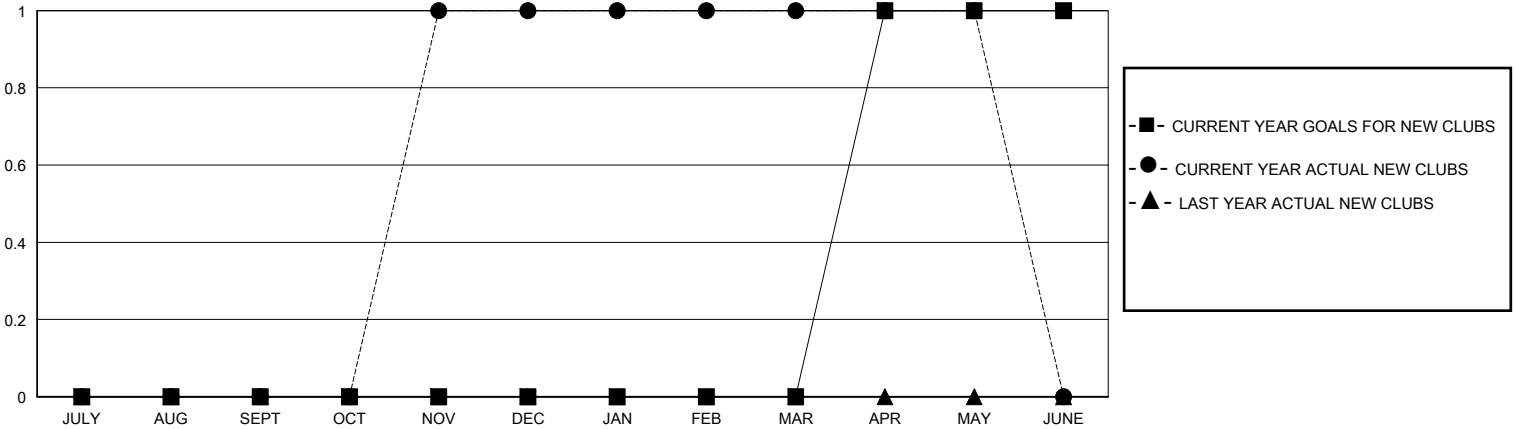
LOCATION NEW ZEALAND

GMT CA

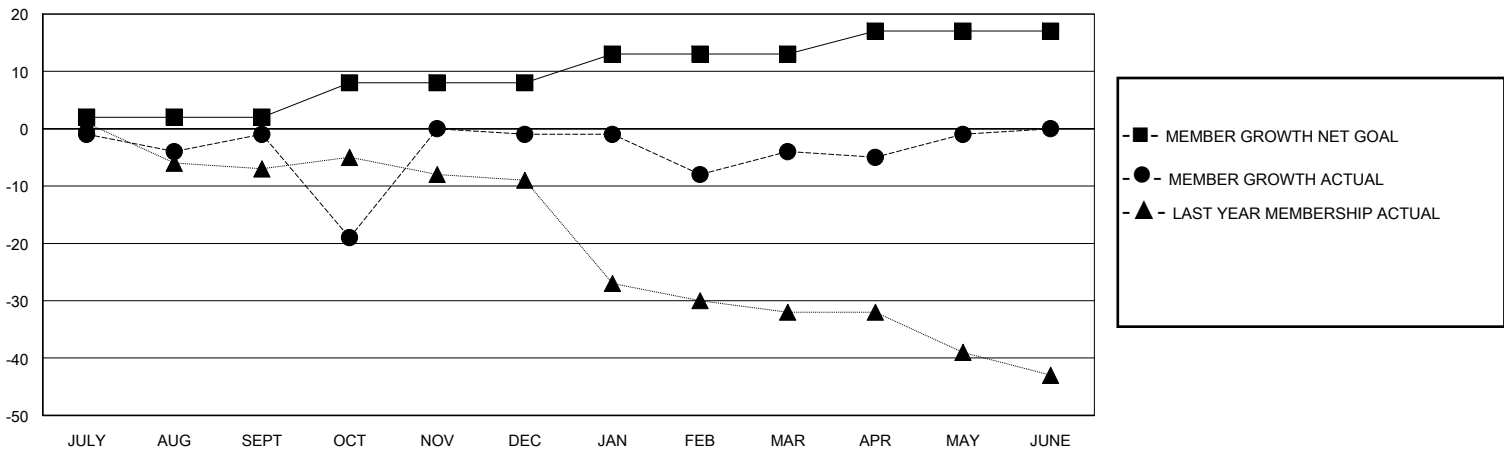
Clubs			
RESULTS FOR 2023-2024			
QUARTER	NEW CLUB GOAL	NEW CLUBS	DROPPED CLUBS
JULY/AUG/SEPT	0	0	0
OCT/NOV/DEC	0	1	1
JAN/FEB/MAR	0	0	0
APR/MAY/JUNE	1	0	0

Members			
RESULTS FOR 2023-2024			
QUARTER	MEMBER GROWTH NET GOAL	MEMBER GROWTH ACTUAL	DROPPED MEMBERS ACTUAL (including transfers)
JULY/AUG/SEPT	2	24	22
OCT/NOV/DEC	6	42	40
JAN/FEB/MAR	5	13	14
APR/MAY/JUNE	4	20	16

GOALS AND ACTUAL NEW CLUBS CUMULATIVE



GOALS AND ACTUAL MEMBERS CUMULATIVE



DROPPED CLUBS: 1	25 CLUBS OF 34 ADDED 1 OR MORE NEW MEMBERS	<u>GENDER DISTRIBUTION</u>	
<u>DROPPED MEMBERS</u>		MALE	659 (68.65%)
DECEASED	CLICK HERE FOR CUMULATIVE MEMBERSHIP DATA	FEMALE	301 (31.35%)
CLUB CANCELLED		TOTAL FAMILY UNIT MEMBERS	111
OTHER		FAMILY MEMBERS PAYING HALF DUES	56
TOTAL		92	